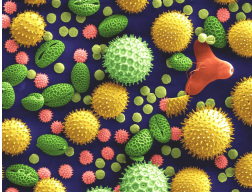


CREATION MOMENTS

Proclaiming Evidence for Truth

THIS WEEK'S CREATION MOMENT

Tiny Time Bombs



For by him were all things created, that are in heaven, and that are in earth, visible and invisible... (Colossians 1:16a)

The discovery of tiny pollen grains in rock shows just how inflated the billions of years claimed by evolutionists really are. This discovery, by a creation scientist, has turned those pollen grains into tiny time bombs that continue to damage the theory of evolution. In 1964, Dr. Clifford Burdick devised a new, better way to collect pollen samples, and he used this to gather samples in the Grand Canyon. These pollen samples, when viewed under the microscope, allowed scientists to identify what kinds of trees they came from. The Hakatai shale, dated by evolutionists at 600 million years old, was among the layers Dr. Burdick examined. According to evolutionary dating, this layer would not have contained pollen from conifer trees. Conifers supposedly hadn't yet evolved. When conifer pollen was discovered in the samples, evolutionists quickly claimed that they were modern pollen grains that had contaminated the sample.

The problem with the evolutionists' explanation is that pollen is resistant to staining. Yet, this pollen was stained with red from the shale itself. It must have been there a long time. The experiment was repeated in 1970. Not only were grains of conifer pollen again found, but pollen from oak trees and evidence of other flowering plants were found as well.

The discovery of these pollen grains offers scientific evidence that evolution's time scale and story of history is wrong. The evidence does support the accuracy of the Bible that tells us that all life began during the first week of the Earth's history a few thousand years ago.

Ref: Burdick, Clifford L. 1981. "Pine pollen in the Grand Canyon." Bible-Science Newsletter, June, p. 1. Photo: Electron microscope image of pollen grains from different plants. (Public Domain)

© 2021, Creation Moments. Churches and parents may freely copy these bulletin inserts.

CREATION MOMENTS, INC.

P. O. Box 839 • Foley, MN 56329 • 800-422-4253

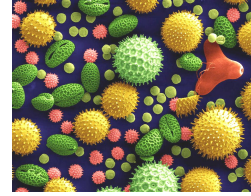
To receive articles like this via e-mail Monday-Friday, enter your e-mail address at the bottom of our homepage: www.creationmoments.com.

CREATION MOMENTS

Proclaiming Evidence for Truth

THIS WEEK'S CREATION MOMENT

Tiny Time Bombs



For by him were all things created, that are in heaven, and that are in earth, visible and invisible... (Colossians 1:16a)

The discovery of tiny pollen grains in rock shows just how inflated the billions of years claimed by evolutionists really are. This discovery, by a creation scientist, has turned those pollen grains into tiny time bombs that continue to damage the theory of evolution. In 1964, Dr. Clifford Burdick devised a new, better way to collect pollen samples, and he used this to gather samples in the Grand Canyon. These pollen samples, when viewed under the microscope, allowed scientists to identify what kinds of trees they came from. The Hakatai shale, dated by evolutionists at 600 million years old, was among the layers Dr. Burdick examined. According to evolutionary dating, this layer would not have contained pollen from conifer trees. Conifers supposedly hadn't yet evolved. When conifer pollen was discovered in the samples, evolutionists quickly claimed that they were modern pollen grains that had contaminated the sample.

The problem with the evolutionists' explanation is that pollen is resistant to staining. Yet, this pollen was stained with red from the shale itself. It must have been there a long time. The experiment was repeated in 1970. Not only were grains of conifer pollen again found, but pollen from oak trees and evidence of other flowering plants were found as well.

The discovery of these pollen grains offers scientific evidence that evolution's time scale and story of history is wrong. The evidence does support the accuracy of the Bible that tells us that all life began during the first week of the Earth's history a few thousand years ago.

Ref: Burdick, Clifford L. 1981. "Pine pollen in the Grand Canyon." Bible-Science Newsletter, June, p. 1. Photo: Electron microscope image of pollen grains from different plants. (Public Domain)

© 2021, Creation Moments. Churches and parents may freely copy these bulletin inserts.

CREATION MOMENTS, INC.

P. O. Box 839 • Foley, MN 56329 • 800-422-4253

To receive articles like this via e-mail Monday-Friday, enter your e-mail address at the bottom of our homepage: www.creationmoments.com.