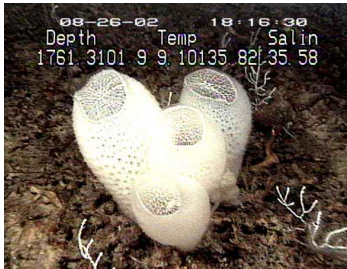


CREATION MOMENTS

Proclaiming Evidence for Truth

THIS WEEK'S CREATION MOMENT

"The Most Perfect Design I've Ever Seen"



These see the works of the LORD, and his wonders in the deep. (Psalm 107:24)

"The most perfect design I've ever seen." Those words were uttered by a materials engineer after studying a deep sea sponge from the Pacific Ocean. And, indeed, the *Euplectella aspergillum*, claimed to be an early and primitive sponge, can teach

modern materials engineers a number of useful things.

The sponge's body is made up of a thin layer of cells over an intricate glass skeleton. The sponge grows into a cylindrical shape about 8 inches long and about an inch across. The wonder lies in the glass skeleton that is made up of vertical and horizontal beams of glass. Diagonal beams strengthen this grid. One-third of these beams are thicker than the others, adding the extra strength of ridges to the cylinder. What's more, each of these glass beams is made up of small cylinders of glass glued together with more glass-like tree rings. The result is a structure that spreads the pressures that might crush an ordinary glass structure this size. It is a delicate looking, but nearly unbreakable, glass structure.

In a less-than-scientific test, one researcher noted that one has to jump full weight on one of these cylinders to even produce any cracking, and such jumping will still not break it. "The most perfect design I've ever seen," said the researcher. There's little that we at Creation Moments can add to that.

Ref: Science News, 3/25/06, pp. 184-185, Aimee Cunningham, "Making the Most of It." Photo: *Euplectella aspergillum*, a glass sponge known as "Venus' flower basket". Public domain.

© 2022, Creation Moments. Churches and parents may freely copy these bulletin inserts.

CREATION MOMENTS, INC.

P. O. Box 839 • Foley, MN 56329 • 800-422-4253

To receive articles like this via e-mail Monday-Friday, enter your e-mail address at the bottom of our homepage: www.creationmoments.com.

CREATION MOMENTS

Proclaiming Evidence for Truth

THIS WEEK'S CREATION MOMENT

"The Most Perfect Design I've Ever Seen"



These see the works of the LORD, and his wonders in the deep. (Psalm 107:24)

"The most perfect design I've ever seen." Those words were uttered by a materials engineer after studying a deep sea sponge from the Pacific Ocean. And, indeed, the *Euplectella aspergillum*, claimed to be an early and primitive sponge, can teach

modern materials engineers a number of useful things.

The sponge's body is made up of a thin layer of cells over an intricate glass skeleton. The sponge grows into a cylindrical shape about 8 inches long and about an inch across. The wonder lies in the glass skeleton that is made up of vertical and horizontal beams of glass. Diagonal beams strengthen this grid. One-third of these beams are thicker than the others, adding the extra strength of ridges to the cylinder. What's more, each of these glass beams is made up of small cylinders of glass glued together with more glass-like tree rings. The result is a structure that spreads the pressures that might crush an ordinary glass structure this size. It is a delicate looking, but nearly unbreakable, glass structure.

In a less-than-scientific test, one researcher noted that one has to jump full weight on one of these cylinders to even produce any cracking, and such jumping will still not break it. "The most perfect design I've ever seen," said the researcher. There's little that we at Creation Moments can add to that.

Ref: Science News, 3/25/06, pp. 184-185, Aimee Cunningham, "Making the Most of It." Photo: *Euplectella aspergillum*, a glass sponge known as "Venus' flower basket". Public domain.

© 2022, Creation Moments. Churches and parents may freely copy these bulletin inserts.

CREATION MOMENTS, INC.

P. O. Box 839 • Foley, MN 56329 • 800-422-4253

To receive articles like this via e-mail Monday-Friday, enter your e-mail address at the bottom of our homepage: www.creationmoments.com.