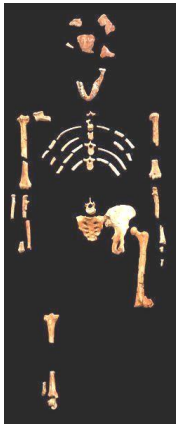


*Proclaiming Evidence for Truth*

## THIS WEEK'S CREATION MOMENT

### Evolutionists Love "Lucy"



*And the LORD God formed man of the dust of the ground, and breathed into his nostrils the breath of life; and man became a living soul. (Genesis 2:7)*

"Lucy" is said by its discoverer, Dr. Donald Johanson, to be the best and latest proof that humans evolved from some ape-like creature. But Lucy is really a monument to human imagination!

In 1978, Dr. Johanson announced his discovery of Lucy to the world at the Nobel Symposium on Early Man. Every newspaper quickly picked up the story. Lucy was supposed to be the earliest human ancestor. Dated by evolutionists at about 3 million years old, Lucy was said to be an almost complete skeleton of a creature that walked upright like humans. However, there are some facts you should know.

For example, her knee comes from a location over 200 feet lower in the rocks and over a mile away from one of her other leg bones! Lucy has been assembled from materials found in two different locations separated by several miles. Her bones were sifted out of plots of ground at these two sites, each of which was almost the size of a football field!

Strangely enough, all of Lucy's bones from one of the locations provide her human-like characteristics, while all of the bones gathered from the other location provide her ape-like characteristics. That sounds at least a little suspicious! Even many evolutionists reject Lucy as a real creature!

Ref: Willis, Tom. 1987. "Lucy' goes to college." CSA News, Feb. p. 2. Photo: "Lucy" skeleton. (CC BY-SA 2.5 Generic)

© 2023, Creation Moments. Churches and parents may freely copy these bulletin inserts.

CREATION MOMENTS, INC.

P. O. Box 839 • Foley, MN 56329 • 800-422-4253

To receive articles like this via e-mail Monday-Friday, enter your e-mail address at the bottom of our homepage: [www.creationmoments.com](http://www.creationmoments.com).

*Proclaiming Evidence for Truth*

## THIS WEEK'S CREATION MOMENT

### Evolutionists Love "Lucy"



*And the LORD God formed man of the dust of the ground, and breathed into his nostrils the breath of life; and man became a living soul. (Genesis 2:7)*

"Lucy" is said by its discoverer, Dr. Donald Johanson, to be the best and latest proof that humans evolved from some ape-like creature. But Lucy is really a monument to human imagination!

In 1978, Dr. Johanson announced his discovery of Lucy to the world at the Nobel Symposium on Early Man. Every newspaper quickly picked up the story. Lucy was supposed to be the earliest human ancestor. Dated by evolutionists at about 3 million years old, Lucy was said to be an almost complete skeleton of a creature that walked upright like humans. However, there are some facts you should know.

For example, her knee comes from a location over 200 feet lower in the rocks and over a mile away from one of her other leg bones! Lucy has been assembled from materials found in two different locations separated by several miles. Her bones were sifted out of plots of ground at these two sites, each of which was almost the size of a football field!

Strangely enough, all of Lucy's bones from one of the locations provide her human-like characteristics, while all of the bones gathered from the other location provide her ape-like characteristics. That sounds at least a little suspicious! Even many evolutionists reject Lucy as a real creature!

Ref: Willis, Tom. 1987. "Lucy' goes to college." CSA News, Feb. p. 2. Photo: "Lucy" skeleton. (CC BY-SA 2.5 Generic)

© 2023, Creation Moments. Churches and parents may freely copy these bulletin inserts.

CREATION MOMENTS, INC.

P. O. Box 839 • Foley, MN 56329 • 800-422-4253

To receive articles like this via e-mail Monday-Friday, enter your e-mail address at the bottom of our homepage: [www.creationmoments.com](http://www.creationmoments.com).