

## THIS WEEK'S CREATION MOMENT

### Beetle Produces Fungicide to Protect Young



*Purge me with hyssop, and I shall be clean: wash me, and I shall be whiter than snow. – Psalm 51:7*

The southern pine beetle is a real problem in southeastern North America. They burrow into pine trees that could be harvested for lumber, often killing them. Those that aren't killed are left, stained an unattractive blue tint by a fungus they leave behind.

That fungus grows from spores carried in a special pouch under the beetle's neck. It will grow into a tiny garden that will feed the baby pine beetles when they hatch. However, several species of mite also infest the beetle. They have their own fungus that they use for food. That fungus will not sustain the baby beetles. Worse, the mite fungus is more robust than the beetle fungus and will crowd it out. However, the beetle also carries a special bacteria. The bacteria produces a very special fungicide. While it does not harm the beetle's fungus, it targets the mite's fungus, wiping it out. So, the baby southern pine beetle's little ones will have their fungus garden to feed them after all.

Natural fungicides and antibiotics surround us. The hyssop that God commanded His people to use in cleansing ceremonies is a natural antibiotic. While man has since learned to use many antibiotics, how did the beetle learn to use the right fungicide to protect its young? It should be clear that this relationship was arranged by our creating God.

**Prayer:** Father, I thank You that I have been cleansed from the filthiness of my sins through the blood of Jesus Christ. Amen.

**Ref:** [http://www.sciencenews.org/view/generic/id/37160/title/beetles\\_grow\\_weed\\_killer](http://www.sciencenews.org/view/generic/id/37160/title/beetles_grow_weed_killer), Susan Milius, "Beetles Grow Weed Killer." Photo: Mountain pine beetle.

© 2014, Creation Moments. Churches and parents may freely copy these bulletin inserts.

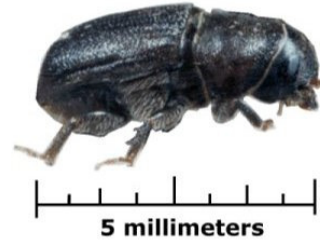
CREATION MOMENTS, INC.

P. O. Box 839 • Foley, MN 56329 • 800-422-4253

To receive our free Today's Creation Moment e-mail, visit [www.creationmoments.com](http://www.creationmoments.com).

## THIS WEEK'S CREATION MOMENT

### Beetle Produces Fungicide to Protect Young



*Purge me with hyssop, and I shall be clean: wash me, and I shall be whiter than snow. – Psalm 51:7*

The southern pine beetle is a real problem in southeastern North America. They burrow into pine trees that could be harvested for lumber, often killing them. Those that aren't killed are left, stained an unattractive blue tint by a fungus they leave behind.

That fungus grows from spores carried in a special pouch under the beetle's neck. It will grow into a tiny garden that will feed the baby pine beetles when they hatch. However, several species of mite also infest the beetle. They have their own fungus that they use for food. That fungus will not sustain the baby beetles. Worse, the mite fungus is more robust than the beetle fungus and will crowd it out. However, the beetle also carries a special bacteria. The bacteria produces a very special fungicide. While it does not harm the beetle's fungus, it targets the mite's fungus, wiping it out. So, the baby southern pine beetle's little ones will have their fungus garden to feed them after all.

Natural fungicides and antibiotics surround us. The hyssop that God commanded His people to use in cleansing ceremonies is a natural antibiotic. While man has since learned to use many antibiotics, how did the beetle learn to use the right fungicide to protect its young? It should be clear that this relationship was arranged by our creating God.

**Prayer:** Father, I thank You that I have been cleansed from the filthiness of my sins through the blood of Jesus Christ. Amen.

**Ref:** [http://www.sciencenews.org/view/generic/id/37160/title/beetles\\_grow\\_weed\\_killer](http://www.sciencenews.org/view/generic/id/37160/title/beetles_grow_weed_killer), Susan Milius, "Beetles Grow Weed Killer." Photo: Mountain pine beetle.

© 2014, Creation Moments. Churches and parents may freely copy these bulletin inserts.

CREATION MOMENTS, INC.

P. O. Box 839 • Foley, MN 56329 • 800-422-4253

To receive our free Today's Creation Moment e-mail, visit [www.creationmoments.com](http://www.creationmoments.com).