

CREATION MOMENTS

Proclaiming Evidence for Truth

THIS WEEK'S CREATION MOMENT

Keeping Plants in the Dark



Praise him for his mighty acts: praise him according to his excellent greatness. – Psalm 150:2

All green plants need light to make the food. Different plants need differing amounts of light. However, scientists have discovered a plant that is a champion at growing in dark conditions. That plant is red algae. It was discovered growing 268 meters below the surface of the ocean. So little light penetrates that deep that it would look absolutely dark to us. Scientists estimate that the light intensity at that depth is 0.0005 as much as at the surface!

How does this plant live in conditions that would quickly kill any other plant? They are designed to be 100 times more efficient at catching and using light than shallow-water plants. Part of this ability comes from the unique structure of the plants. Plants typically line their cell walls with calcium, which prevents some light from getting into the cell. These plants only line the vertical walls of their cells with calcium, so there is little to prevent light from entering the cells of the plant. Additionally, the plant's cells are stacked so that the light can penetrate deep into the plant.

Good engineering, not chance, created this plant. Evolution can offer no reason for this plant to develop. But the Creator's unlimited imagination and abilities easily explain why this plant exists.

Ref: S. Weisburd. "The World's Deepest-dwelling Plant." *Science News*, Vol. 127, p. 4. Photo: Courtesy of Eric Guinther. (GNU Free Documentation License, Version 1.2)

© 2016, Creation Moments. Churches and parents may freely copy these bulletin inserts.

CREATION MOMENTS, INC.

P. O. Box 839 • Foley, MN 56329 • 800-422-4253

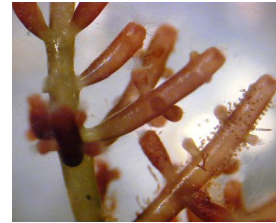
If these bulletin inserts are a blessing to you, please consider making a donation of any amount so we can continue to provide this free resource: www.creationmoments.com/donate.

CREATION MOMENTS

Proclaiming Evidence for Truth

THIS WEEK'S CREATION MOMENT

Keeping Plants in the Dark



Praise him for his mighty acts: praise him according to his excellent greatness. – Psalm 150:2

All green plants need light to make the food. Different plants need differing amounts of light. However, scientists have discovered a plant that is a champion at growing in dark conditions. That plant is red algae. It was discovered growing 268 meters below the surface of the ocean. So little light penetrates that deep that it would look absolutely dark to us. Scientists estimate that the light intensity at that depth is 0.0005 as much as at the surface!

How does this plant live in conditions that would quickly kill any other plant? They are designed to be 100 times more efficient at catching and using light than shallow-water plants. Part of this ability comes from the unique structure of the plants. Plants typically line their cell walls with calcium, which prevents some light from getting into the cell. These plants only line the vertical walls of their cells with calcium, so there is little to prevent light from entering the cells of the plant. Additionally, the plant's cells are stacked so that the light can penetrate deep into the plant.

Good engineering, not chance, created this plant. Evolution can offer no reason for this plant to develop. But the Creator's unlimited imagination and abilities easily explain why this plant exists.

Ref: S. Weisburd. "The World's Deepest-dwelling Plant." *Science News*, Vol. 127, p. 4. Photo: Courtesy of Eric Guinther. (GNU Free Documentation License, Version 1.2)

© 2016, Creation Moments. Churches and parents may freely copy these bulletin inserts.

CREATION MOMENTS, INC.

P. O. Box 839 • Foley, MN 56329 • 800-422-4253

If these bulletin inserts are a blessing to you, please consider making a donation of any amount so we can continue to provide this free resource: www.creationmoments.com/donate.