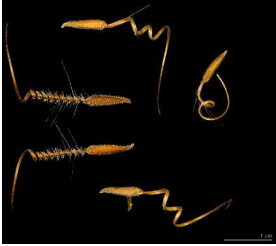


# CREATION MOMENTS

*Proclaiming Evidence for Truth*

## THIS WEEK'S CREATION MOMENT

### The Living Corkscrew



*And when he sowed, some seeds fell by the way side, and the fowls came and devoured them up: – Matthew 13:4*

If you have never opened a corked bottle, here's how to use a corkscrew. First, puncture the cork with the corkscrew's tip. Then turn the handle, forcing the metal screw deeper and deeper into the cork. Finally, when it's deep inside the cork, pull on the handle of

the corkscrew to remove the cork from the bottle.

Well, what would you think if I told you that there is a seed that is shaped like a corkscrew and that it can literally plant itself in the soil? The seed of the redstem filaree is indeed a wonder to behold, especially when you see it in time-lapse photography.

As the seed dries, it changes shape and launches itself from the parent plant by a spring-type mechanism. As it falls, its corkscrew-shaped tail starts it spinning so it lands farther away from the parent plant. Once it lands, the seed pokes its head into the soil. Then its whole length starts turning in a counter-clockwise direction. With each revolution, it bores itself deeper and deeper into the soil. If the seed encounters an obstacle, it simply reverses direction, backs out and finds a better path!

All right, evolutionists, answer this question: Which came first – the seed's corkscrew shape or its "knowledge" of how to turn in the right direction until it has planted itself in the soil at the right depth? Can't answer that? Then perhaps you should ask a Bible-believing creationist for the answer!

Ref: <http://theawesomer.com/the-self-planting-seed/313970/>. Photo: *Erodium cicutarium* seeds at the Museum of Toulouse in France. Courtesy of Didier Descouens. (CC-BY-SA 4.0 INTL)

© 2016, Creation Moments. Churches and parents may freely copy these bulletin inserts.

CREATION MOMENTS, INC.

P. O. Box 839 • Foley, MN 56329 • 800-422-4253

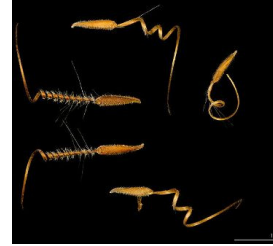
If these bulletin inserts are a blessing to you, please consider making a donation of any amount so we can continue to provide this free resource: [www.creationmoments.com/donate](http://www.creationmoments.com/donate).

# CREATION MOMENTS

*Proclaiming Evidence for Truth*

## THIS WEEK'S CREATION MOMENT

### The Living Corkscrew



*And when he sowed, some seeds fell by the way side, and the fowls came and devoured them up: – Matthew 13:4*

If you have never opened a corked bottle, here's how to use a corkscrew. First, puncture the cork with the corkscrew's tip. Then turn the handle, forcing the metal screw deeper and deeper into the cork. Finally, when it's deep inside the cork, pull on the handle of

the corkscrew to remove the cork from the bottle.

Well, what would you think if I told you that there is a seed that is shaped like a corkscrew and that it can literally plant itself in the soil? The seed of the redstem filaree is indeed a wonder to behold, especially when you see it in time-lapse photography.

As the seed dries, it changes shape and launches itself from the parent plant by a spring-type mechanism. As it falls, its corkscrew-shaped tail starts it spinning so it lands farther away from the parent plant. Once it lands, the seed pokes its head into the soil. Then its whole length starts turning in a counter-clockwise direction. With each revolution, it bores itself deeper and deeper into the soil. If the seed encounters an obstacle, it simply reverses direction, backs out and finds a better path!

All right, evolutionists, answer this question: Which came first – the seed's corkscrew shape or its "knowledge" of how to turn in the right direction until it has planted itself in the soil at the right depth? Can't answer that? Then perhaps you should ask a Bible-believing creationist for the answer!

Ref: <http://theawesomer.com/the-self-planting-seed/313970/>. Photo: *Erodium cicutarium* seeds at the Museum of Toulouse in France. Courtesy of Didier Descouens. (CC-BY-SA 4.0 INTL)

© 2016, Creation Moments. Churches and parents may freely copy these bulletin inserts.

CREATION MOMENTS, INC.

P. O. Box 839 • Foley, MN 56329 • 800-422-4253

If these bulletin inserts are a blessing to you, please consider making a donation of any amount so we can continue to provide this free resource: [www.creationmoments.com/donate](http://www.creationmoments.com/donate).